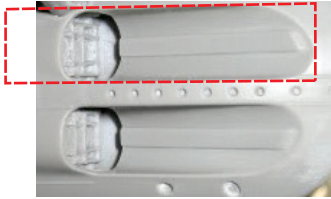


# TORPEDO SHUTTERS

## Stern Shutters for GATOs (1:72)

The Revell 1:72 Gato kit lacks torpedo shutters for the stern. For many boats this is fine, not every Gato or Balao had stern shutters. But if your boat did, you need the valley stern shutters.

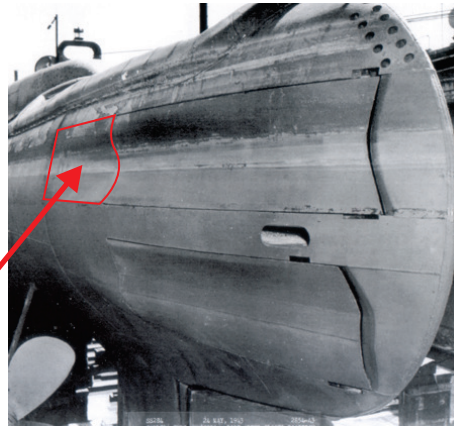
### 1. CUT OUT KIT CAVITIES



Trim the base/sprue off each shutter.

On the kit, cut out the molded interior of the stern shutter area. Cut a smaller width than you need, and keep enlarging to fit the resin shutters for height.

Cut beyond forward to allow for the front piece of each shutter.

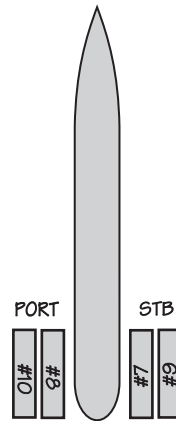
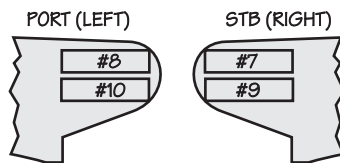


FRONT PIECE



### 2. ADD FLAT PIECE

Once the shutter cavities are open, they are deep and the shape has changed a bit. Add a small piece of sheet plastic at the very stern.



### 3. SHAPE STERN

Shape the stern to fit the resin curve, by filing until the stern blends with the shutters. You may have to shim above and below with thin sheet plastic.



NOTE: Being resin, these shutters are NOT designed to be displayed OPEN.

AMAP  
+  
Accurate  
Model  
Parts

<http://amp.rokkit.biz>

GATO Torpedo Shutters

USN-TORSH-T-S-072  
**STERN**