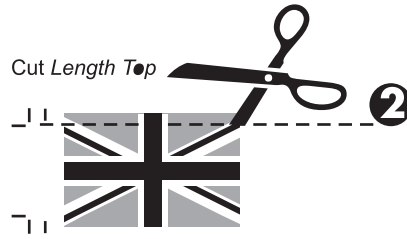
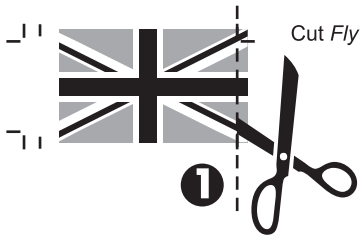


# 1. CUT

## METHOD 1: Sharp Scissors

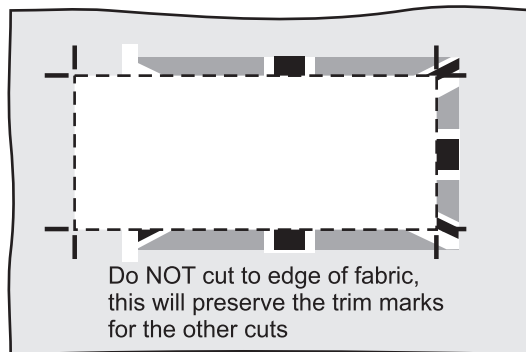
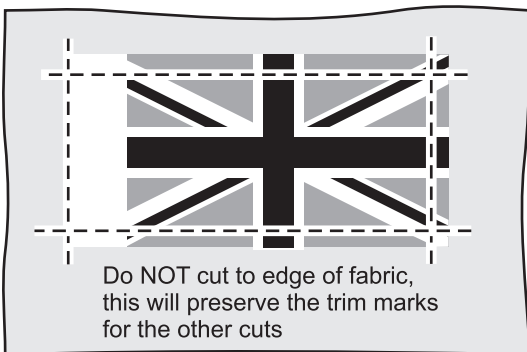
Use *sharp* scissors to cut each flag. To avoid losing the trim marks, cut in the following order:



Cutting in this order will leave enough cut marks to make the next cut. The last cut, the *Hoist*, can be done "by eye." It is best to leave *too much white* and make a second cut later.

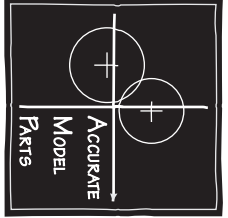
## METHOD 2: Straight Edge and Sharp Knife

Use a straight edge (metal ruler) and *sharp* knife. Follow the trim marks and cut, but not all the way to the edge of the fabric, leave a frame. This method is precise, but it is difficult to cut fabric without stretching. Sharp scissors might be best.



## NO FRAY

AMP Flags are sealed on both faces, which prevents fraying. Rough handling/outdoor RC use *may* increase the possibility of micro fraying (*not* large fringes but tiny "sawtooth fuzz"). For added protection, seal the *outer* edges with white PVA glue (Polyvinyl Acetate): Elmers, Aquadhere, Unibond, Pritt, Bostick - any white PVA glue that dries clear and is water washable. Apply sparingly with a toothpick.



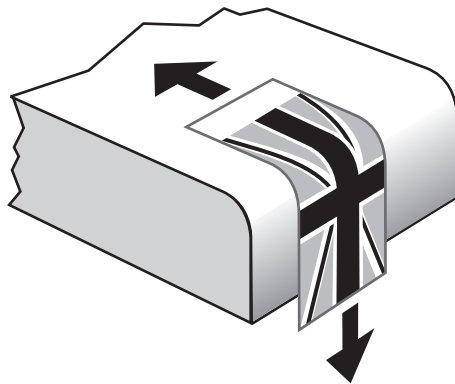
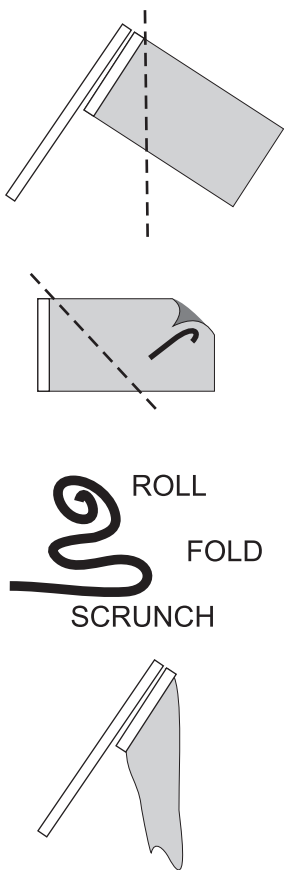
ACCURATE  
MODEL PARTS

FLAG

<http://amp.rokkt.biz>

## 2. SHAPE

Gently rub the flag between your fingers to soften it slightly. You can roll it over a smooth, rounded edge. This will also add realistic wear and fade, but **be careful**: though AMP flags are sealed and durable, you can abrade the image and the material. It may help to wet the flag first.

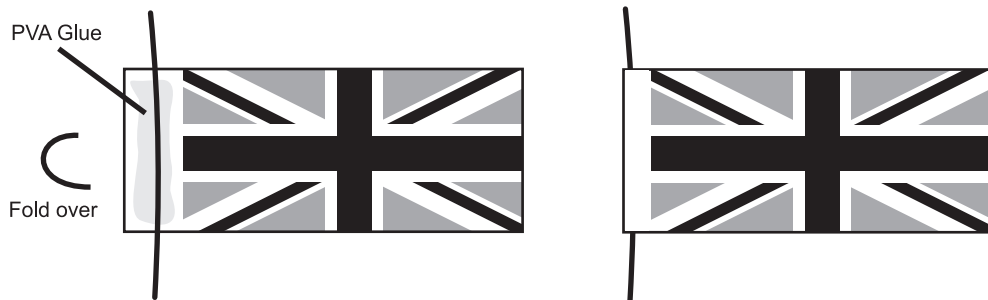
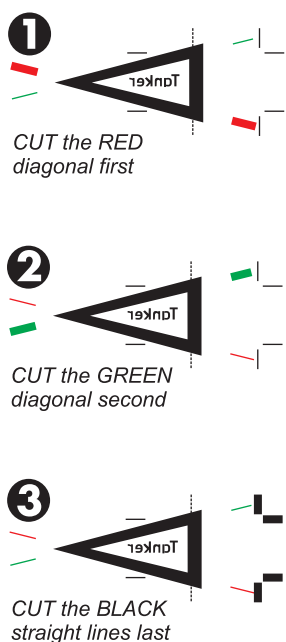


Shape the flag by crunching it into the waving or limp pattern you would like to display. The natural stiffness will keep many shapes. AMP recommend studying photos of real flags to duplicate natural waves or hanging folds.

## 3. APPLY

**UBOAT PENNANTS**  
Use the color-coded lines to cut out Uboat Pennants

Many flags have metal grommets at the hoist corners, where the halyard is attached (metal clips usually - see the Price List for example). You can simulate this by placing a thread to act as a halyard. This is where you may have to cut back the hoist, but it is better to have too much and cut twice, than to have too little! For halyard thread, AMP recommend sewing/fabric stores for white cotton thread. Most have hairs, but a few are very tight and almost hairless. (Beeswax can also be used on hairy line to smooth it.) Glue with white glue/PVA, and fold the hoist over.



You can also connect a halyard to the corners with a sewing needle and knotted thread. Some small boats had a tube/sleeve hoist for sliding over short staffs.

If you have questions or suggestions, please email:  
[info@amp-modelparts.biz](mailto:info@amp-modelparts.biz)

We love feedback to improve our product, and to add new lines.  
*It's about the model.*